



Revista Portuguesa de
Cardiologia
Portuguese Journal of **Cardiology**
www.revportcardiol.org



ORIGINAL ARTICLE

Comparative clinical performance of two types of drug-eluting stents with abluminal biodegradable polymer coating: Five-year results of the DESTINY randomized trial

Guy F.A. Prado Jr^{a,b}, Alexandre A.C. Abizaid^c, George C. Meireles^d, Rogério Sarmiento-Leite^e, Mauricio Prudente^f, Marcelo Cantarelli^g, Adriano D. Dourado^h, Jose Mariani Jr^{a,b,i}, Marco A. Perin^j, Costantino Costantini^k, Ricardo Costa^c, J. Ribamar Costa^c, Daniel Chamie^c, Carlos M. Campos^{a,b}, Expedito E. Ribeiro^a, Pedro A. Lemos^{a,b,*}

^a Heart Institute (InCor), University of São Paulo Medical School, São Paulo, SP, Brazil

^b Hospital Israelita Albert Einstein, São Paulo, SP, Brazil

^c Instituto Dante Pazzanese de Cardiologia, São Paulo, SP, Brazil

^d Hospital do Servidor Público Estadual – IAMSPE, São Paulo, SP, Brazil

^e Institute of Cardiology/Fundação Universitária de Cardiologia de Porto Alegre, Porto Alegre, RS, Brazil

^f Hospital Encore, Aparecida de Goiania, GO, Brazil

^g Hospital Bandeirantes, São Paulo, SP, Brazil

^h Hospital Santa Izabel, Salvador, BA, Brazil

ⁱ Faculdade de Ciências Médicas da Santa Casa de São Paulo, São Paulo, SP, Brazil

^j Hospital Santa Marcelina, São Paulo, SP, Brazil

^k Hospital Cardiológico Costantini, Curitiba, PR, Brazil

Received 10 June 2019; accepted 5 May 2020

KEYWORDS

Biodegradable polymers;
Drug-eluting stent;
Intravascular ultrasound;
Optical coherence tomography;
Stent thrombosis

Abstract

Introduction and Objectives: The Stents Coated With the Biodegradable Polymer on Their Abluminal Faces and Elution of Sirolimus Versus Biolimus Elution for the Treatment of de Novo Coronary Lesions – DESTINY Trial is a non-inferiority randomized study that compared the Inspiron™ sirolimus-eluting stent (SES) with the control Biomatrix™ Flex biolimus-eluting stent (BES). Previous reports in the first year showed similar outcomes for both stents, in clinical, angiographic, optical coherence tomography, and intravascular ultrasound assessments. The present analysis aims to compare the clinical performance of these two biodegradable polymer drug-eluting stents five years after the index procedure.

* Corresponding author.

E-mail address: pedrolemos.cardio@gmail.com (P.A. Lemos).

<https://doi.org/10.1016/j.repc.2020.05.017>

0870-2551/© 2020 Sociedade Portuguesa de Cardiologia. Published by Elsevier España, S.L.U. This is an open access article under the CC BY-NC-ND license (<http://creativecommons.org/licenses/by-nc-nd/4.0/>).

Please cite this article in press as: G.F.A. Prado Jr, A.A.C. Abizaid, G.C. Meireles et al., Comparative clinical performance of two types of drug-eluting stents with abluminal biodegradable polymer coating: Five-year results of the DESTINY randomized trial, Revista Portuguesa de Cardiologia, <https://doi.org/10.1016/j.repc.2020.05.017>

Methods: A total of 170 patients (194 lesions) were randomized in a 2:1 ratio for treatment with SES or BES, respectively. The primary endpoint for the present study was the five-year rate of combined major adverse cardiac events, defined as cardiac death, myocardial infarction, or target lesion revascularization.

Results: At five years, the primary endpoint occurred in 12.5% and 17.9% of the SES and BES groups, respectively ($p=0.4$). There was no definite or probable stent thrombosis among patients treated with the novel SES stent during the five years of follow-up, and no stent thrombosis after the first year in the BES group.

Conclusions: The novel Inspiron™ stent had similar good clinical performance in long-term follow-up when compared head-to-head with the control latest-generation Biomatrix™ Flex biolimus-eluting stent.

© 2020 Sociedade Portuguesa de Cardiologia. Published by Elsevier España, S.L.U. This is an open access article under the CC BY-NC-ND license (<http://creativecommons.org/licenses/by-nc-nd/4.0/>).

PALAVRAS-CHAVE

Polímero
biodegradável;
Stent farmacológico;
Ultrassom
intracoronário;
Tomografia de
coerência óptica;
Trombose de stent

Comparação da performance clínica de dois tipos de stents farmacológicos com recobrimento polimérico abluminal biodegradável: resultados de cinco anos do estudo randomizado DESTINY

Resumo

Introdução e objetivos: *Stents Coated with the Biodegradable Polymer on their Abluminal Faces and Elution of Sirolimus Versus Biolimus Elution for the Treatment of de Novo Coronary Lesions (Destiny Trial)* é um estudo randomizado de não inferioridade que comparou o stent farmacológico eluído com Sirolimus Inspiron® (SES) ao controle o stent Biomatrix® Flex eluído com biolimus (BES). Relatórios dentro do primeiro ano mostraram resultados semelhantes para ambos os stents, em seguimento clínico, angiográfico e também em análise de tomografia de coerência ótica e ultrassom intracoronário. A presente análise tem como objetivo comparar o desempenho clínico desses dois stents farmacológicos com polímeros biodegradáveis após cinco anos do procedimento índice.

Métodos: Foram randomizados 170 pacientes (194 lesões) em uma proporção de 2:1 para tratamento com SES ou BES, respetivamente. O desfecho primário para o presente estudo foi a taxa em cinco anos de eventos cardíacos adversos maiores combinados, definida como morte cardíaca, infarto do miocárdio ou revascularização da lesão-alvo.

Resultados: Em cinco anos, o desfecho primário ocorreu em 12,5% e 17,9% para o grupo SES e BES, respectivamente ($p=0,4$). Não houve trombose de stent definitiva ou provável entre os pacientes tratados com o novo SES durante os cinco anos de seguimento e ausência de trombose de stent após o primeiro ano no grupo BES.

Conclusões: O novo stent Inspiron® apresentou uma boa e semelhante performance clínica no seguimento em longo prazo, quando comparado com o controle o stent de última geração Biomatrix® Flex.

© 2020 Sociedade Portuguesa de Cardiologia. Publicado por Elsevier España, S.L.U. Este é um artigo Open Access sob uma licença CC BY-NC-ND (<http://creativecommons.org/licenses/by-nc-nd/4.0/>).

Introduction

Drug-eluting stents (DES) significantly reduce restenosis and the need for repeat intervention compared to bare-metal stents.¹ However, over time, concerns have been raised related to their procedural performance and their long-term safety.² The so-called new-generation DES comprise a heterogeneous group of devices, each incorporating different improvements in one or more features of DES construction. Overall, new-generation DES have been shown to be associated with better outcomes than earlier DES formulations.³ However, new DES do not present a class-effect

performance, with previous reports demonstrating that subtle, though sizable, contrasts might exist between different DES.⁴

Coronary artery disease is a chronic condition, for which any optimal therapeutic strategy must provide a long-lasting protective effect, ideally lifelong. Recent findings have shown that percutaneous coronary intervention with bioabsorbable scaffolds may be associated with ominous complications years after the initial procedure,⁵ a reminder to the medical community of the importance of keeping track of the very long-term performance of any coronary treatment, including metal DES.

The Stents Coated With the Biodegradable Polymer on Their Abluminal Faces and Elution of Sirolimus Versus Biolimus Elution for the Treatment of de Novo Coronary Lesions – DESTINY Trial is a randomized study that compared the novel Inspiron™ sirolimus-eluting stent (SES) head-to-head with the control Biomatrix™ Flex biolimus-eluting stent (BES).^{6,7} Previous reports from DESTINY showed similar outcomes in the first year for both stents, in clinical, angiographic, optical coherence tomography, and intravascular ultrasound assessments.^{6,7}

The present analysis aims to compare the long-term clinical performance of the two latest-generation DES five years after the index procedure.

Methods

Details of the study protocol and the baseline characteristics of the study population, as well as clinical, angiographic, and intravascular imaging results after the first months, have been published elsewhere.^{6,7} Briefly, DESTINY was initially designed as a non-inferiority trial to compare SES with BES for the primary endpoint of angiographic late lumen loss at nine months.⁷ Thereafter, patients were followed clinically for five years. Between June and December 2013, patients with one or two de novo lesions (n=170) were included and randomized in a 2:1 ratio for treatment with the Inspiron™ sirolimus-eluting stent (Scitech, Aparecida de Goiania, Brazil) or the Biomatrix™ biolimus-eluting stent (Biosensors Europe SA, Morges, Switzerland), respectively. Dual antiplatelet therapy was recommended for 12 months, followed by lifelong aspirin. Written informed consent was obtained from all patients in accordance with the Declaration of Helsinki, and the local and national ethics committees approved the trial.

In the present study, we report the five-year outcomes of patients included in the DESTINY trial, who were assessed for the occurrence of the primary endpoint of major adverse cardiac events (MACE), defined as cardiac death, myocardial infarction (MI), or target lesion revascularization. Deaths were considered to be cardiac unless unequivocally related to a noncardiac cause. MI was diagnosed as previously proposed.⁸ Target lesion revascularization was defined as any coronary reintervention (surgical or percutaneous) to treat a lesion located within the stent and its 5-mm proximal and 5-mm distal edges. Stent thromboses were classified according to the definitions proposed by the Academic Research Consortium.⁹ An independent data safety and monitoring board periodically reviewed the accumulated study data for recommendations on participant safety and efficacy, study conduct, and continuation or modifications. All complications were adjudicated by an independent adverse events committee.

Categorical variables were presented as percentages and compared using Fisher's exact test or the chi-square test. Continuous variables were presented as means and standard deviations and compared using the Student's t test. The risk of adverse events was estimated using the Kaplan-Meier method and compared using the Breslow test (generalized Wilcoxon). A p-value of <0.05 was considered to be significant. Statistical analyses were performed using IBM SPSS version 21.0 (IBM Corporation).

Results

Overall, 170 patients with 194 treated lesions were included in the study and comprise the final population. Baseline clinical and procedural characteristics of the two groups were similar (Table 1).

A total of 16 patients (9.4%) were lost to follow-up (Figure 1), in all instances due to inability to contact them after a missed scheduled appointment. At five years, the primary endpoint of MACE had occurred in 12.5% and 17.9% of the SES and BES groups, respectively (p=0.4; Figure 2 and Table 2). Both stents presented low rates of repeat revascularization during the follow-up period, with only around 5% of patients needing to be retreated after five years. Though not statistically significant, the group treated with SES tended to have a numerically lower rate of MI. Of note, there was no definite or probable stent thrombosis among patients treated with the novel SES stent during the five years of follow-up, and no stent thrombosis after the first year in the BES group.

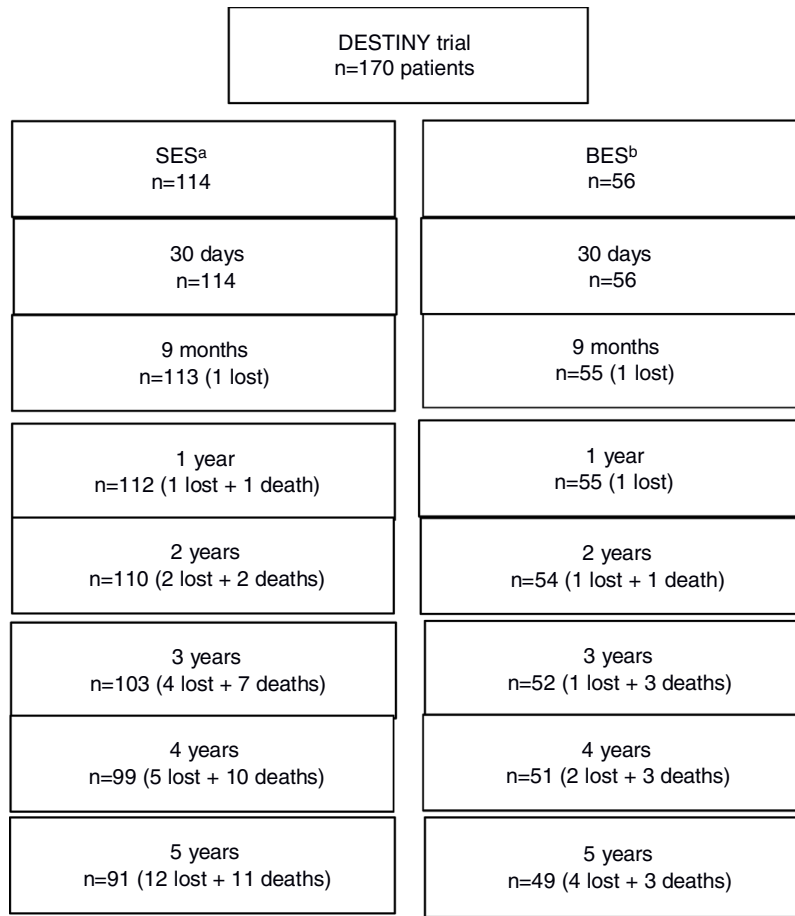
Discussion

The main finding of the present study was that patients treated with the Inspiron™ sirolimus-eluting stent had good outcomes at five years, comparable to the control Biomatrix™ Flex biolimus-eluting stent. Importantly, no cases of definite or probable stent thrombosis were associated with either stent after the first year of follow-up.

The low rates of adverse events observed in the DESTINY trial are noteworthy, in the SES arm as well as in the control BES arm. This low frequency of complications may be related to the relatively low-risk profile of the included population. To compare, in the LEADERS trial of all-comers treated with a BES similar to the control stent used in DESTINY, the five-year rate of all-cause death, any MI, or all-cause revascularization was 35.1%.³ Nevertheless, the favorable results found in our study are in line with several other trials of DES with biodegradable polymer coatings, in which the five-year rates of combined events ranged between 10.0% and 13.4%.^{10–13}

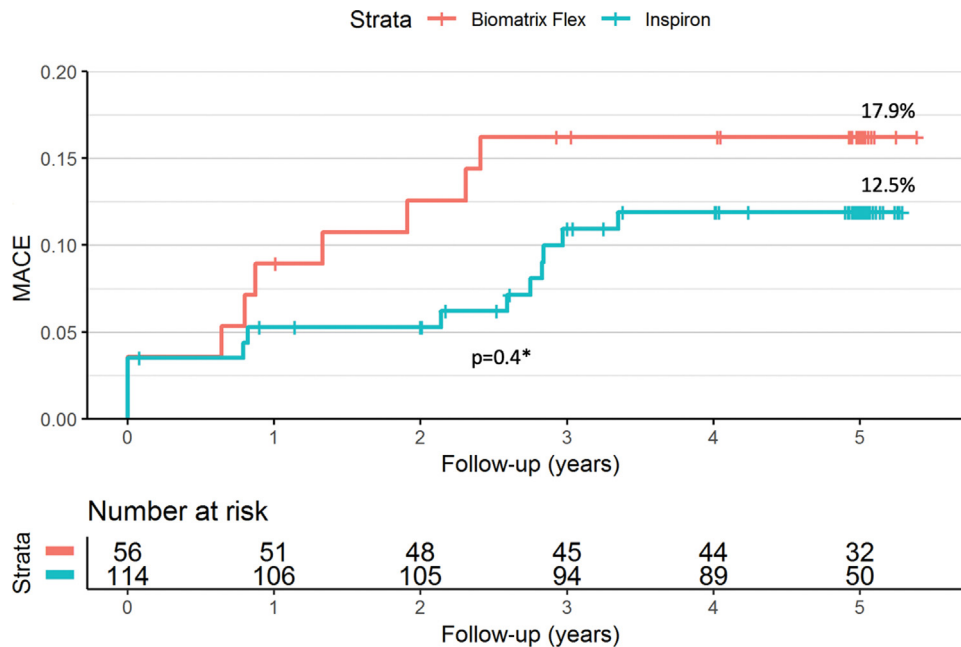
Both study stents are abluminally coated with biodegradable polymers that, theoretically, undergo full degradation by 6–9 months, after which the remaining implant should resemble a bare-metal stent.⁷ Previous data from the DESTINY trial had shown that both study stents are associated with excellent inhibition of neointimal growth and clinical performance in the first months after implantation.^{6,7} The present study addresses the central issue of the safety and efficacy profiles of the stents beyond the first year, after degradation of the polymer coating.

The low rates of repeat revascularization seen in the present report, consistently in both arms across the five-year follow-up period, strongly suggests that the two study stents are associated with long-term efficacy long after implantation. Equally important, both SES and BES were associated with zero stent thrombosis after the first year, highlighting the superior safety behavior of both stents up to five years.



^aInspiron™ sirolimus-eluting stent; ^bBiomatrix™ Flex biolimus-eluting stent.

Figure 1 Flowchart of losses to follow-up.



*Breslow test (generalized Wilcoxon).

Figure 2 Kaplan-Meier estimates of cumulative incidence of major adverse cardiac events (MACE) (cardiac death, myocardial infarction or target lesion revascularization) up to five years.

Table 1 Baseline and procedural characteristics of the study population.

	SES (n=114 patients; 132 lesions)	BES (n=56 patients; 62 lesions)	p
Age, years	59.9±9.4	59.9±9.8	>0.9
Male	66 (57.9)	27 (48.2)	0.2
Diabetes	41 (36.6)	20 (36.4)	>0.9
Prior MI	51 (45.1)	23 (41.1)	0.6
Stable coronary disease	85 (74.6)	39 (69.6)	0.5
Target vessel ^a			
LAD	60 (45.5)	27 (43.6)	0.8
LCx	34 (25.8)	18 (29.0)	0.6
RCA	38 (28.8)	17 (27.4)	0.8
Lesion length, mm	14.6±6.4	15.5±6.8	0.4
Reference diameter, mm	2.74±0.44	2.83±0.43	0.2
Baseline minimum lumen diameter, mm	0.89±0.35	0.92±0.40	0.6
Baseline diameter stenosis, %	67.6±11.9	67.5±12.5	0.9

^a per lesion.

Numbers are mean ± standard deviation or n (proportions).

BES: biolimus-eluting stent; LAD: left anterior descending artery; LCx: left circumflex artery; MI: myocardial infarction; RCA: right coronary artery; SES: sirolimus-eluting stent.

Table 2 Clinical outcomes at five years of follow-up.

	SES (n=114 patients)	BES (n=56 patients)	p
1 year			
Cardiac death	0.0	0.0	-
MI	4.4	7.4	0.5
Target lesion revascularization	2.7	3.7	0.7
MACE	6.3	9.4	0.5
Definite or probable stent thrombosis	0.0	1.8	0.2
2 years			
Cardiac death	0.0	0.0	
Myocardial infarction	4.4	11.3	0.1
Target lesion revascularization	2.7	5.6	0.4
MACE	6.3	13.3	0.2
Definite or probable stent thrombosis	0.0	1.8	0.2
3 years			
Cardiac death	2.8	1.9	0.7
Myocardial infarction	5.4	14.5	0.1
Target lesion revascularization	4.6	5.4	0.8
MACE	10.0	16.3	0.2
Definite or probable stent thrombosis	0.0	1.8	0.2
4 years			
Cardiac death	3.8	1.9	0.5
Myocardial infarction	6.3	14.5	0.1
Target lesion revascularization	4.6	5.4	0.8
MACE	12.0	16.3	0.4
Definite or probable stent thrombosis	0.0	1.8	0.2
5 years			
Cardiac death	3.8	1.9	0.5
Myocardial infarction	6.5	15.4	0.1
Target lesion revascularization	4.6	5.6	0.8
MACE	12.5	17.9	0.4
Definite or probable stent thrombosis	0	1.9	0.14

Numbers are cumulative hazard ratios.

BES: biolimus-eluting stent; MACE: major adverse cardiac events (cardiac death, myocardial infarction, or target lesion revascularization); MI: myocardial infarction; SES: sirolimus-eluting stent.

Limitations

We should emphasize that the present study has limitations. The trial was initially designed to assess non-inferiority between the two stents regarding angiographic findings. Although we herein report a predefined subsidiary analysis, the present results should be analyzed with caution. Most of the limitations are related to the small patient sample, which can intrinsically bias the analysis of infrequent events, such as very late stent thrombosis. Nevertheless, the zero very late thrombosis rate is reassuring and strongly indicates a good safety profile. The relatively low complexity of clinical and angiographic features of our cohort may have influenced the favorable results found in the present work, which cannot be directly extrapolated to other subsets. Nevertheless, the novel Inspiron™ stent, as well as the comparator Biomatrix™ stent, have both been tested in scenarios of higher complexity, in which they also showed good clinical performance.^{3,14}

Conclusion

The Inspiron™ stent, an ultrathin-strut, low-dose, sirolimus-eluting device with abluminal-only biodegradable polymer coating, had similar good clinical performance in long-term follow-up when compared head-to-head with the control latest-generation Biomatrix™ Flex biolimus-eluting stent.

Funding

The study was sponsored by Scitech Medical (Aparecida de Goiania, Brazil). The company contributed to study design but had no access to the raw data and no role in conducting the trial (data collection and monitoring) as well as no role in data analysis, interpretation, or writing of the manuscript.

Conflicts of interest

Dr. Prado Jr reports consulting fee from Scitech; Dr. Chamie has received consulting fees from St. Jude Medical; the other authors have no conflicts to declare.

References

1. Palmerini T, Benedetto U, Biondi-Zoccai G, et al. Long-term safety of drug-eluting and bare-metal stents: evidence from a comprehensive network meta-analysis. *J Am Coll Cardiol*. 2015;65:2496–507.
2. Nakazawa G, Finn AV, Joner M, et al. Delayed arterial healing and increased late stent thrombosis at culprit sites after

- drug-eluting stent placement for acute myocardial infarction patients: an autopsy study. *Circulation*. 2008;118:1138–45.
3. Serruys PW, Farooq V, Kalesan B, et al. Improved safety and reduction in stent thrombosis associated with biodegradable polymer-based biolimus-eluting stents versus durable polymer-based sirolimus-eluting stents in patients with coronary artery disease: final 5-year report of the LEADERS (Limus Eluted From A Durable Versus ERodable Stent Coating) randomized, noninferiority trial. *JACC Cardiovasc Interv*. 2013;6:777–89.
4. Jensen LO, Thayssen P, Maeng M, et al. Randomized comparison of a biodegradable polymer ultrathin strut sirolimus-eluting stent with a biodegradable polymer biolimus-eluting stent in patients treated with percutaneous coronary intervention: the SORT OUT VII Trial. *Circ Cardiovasc Interv*. 2016;9.
5. Zhang XL, Zhu QQ, Kang LN, et al. Mid- and long-term outcome comparisons of everolimus-eluting bioresorbable scaffolds versus everolimus-eluting metallic stents: a systematic review and meta-analysis. *Ann Intern Med*. 2017;167:642–54.
6. Costa JR Jr, Chamie D, Abizaid AA, et al. Intravascular imaging comparison of two metallic limus-eluting stents abuminally coated with biodegradable polymers: IVUS and OCT results of the DESTINY trial. *Int J Cardiovasc Imaging*. 2017;33:161–8.
7. Lemos PA, Abizaid AA, Meireles GC, et al. Metallic limus-eluting stents abuminally coated with biodegradable polymers: angiographic and clinical comparison of a novel ultra-thin sirolimus stent versus biolimus stent in the DESTINY Randomized Trial. *Cardiovasc Ther*. 2015;33:367–71.
8. Thygesen K, Alpert JS, Jaffe AS, et al. Third universal definition of myocardial infarction. *Eur Heart J*. 2012;33:2551–67.
9. Serruys PW, Daemen J. Are drug-eluting stents associated with a higher rate of late thrombosis than bare metal stents? Late stent thrombosis: a nuisance in both bare metal and drug-eluting stents. *Circulation*. 2007;115:1433–9, discussion 9.
10. Niemelä KO. Biodegradable coating for drug-eluting stents—more than a facelift? *Eur Heart J*. 2008;29:1930–1.
11. Waltenberger J, Brachmann J, van der Heyden J, et al. Five-year results of the bioflow-III registry: real-world experience with a biodegradable polymer sirolimus-eluting stent. *Cardiovasc Revascular Med*. 2020;21:63–9.
12. Danzi GB, Piccolo R, Chevalier B, et al. Five-year clinical performance of a biodegradable polymer-coated biolimus-eluting stent in unselected patients. *Heart*. 2017;103:111.
13. Vlachojannis GJ, Smits PC, Hofma SH, et al. Biodegradable polymer biolimus-eluting stents versus durable polymer everolimus-eluting stents in patients with coronary artery disease: final 5-year report from the COMPARE II Trial (Abluminal Biodegradable Polymer Biolimus-Eluting Stent Versus Durable Polymer Everolimus-Eluting Stent). *JACC: Cardiovasc Interv*. 2017;10:1215–21.
14. Prado GF Jr, Ribeiro EE, Melo PH, et al. Clinical performance of a novel ultrathin strut, low-dose, sirolimus-eluting stent with abluminal-only biodegradable polymeric coating for patients undergoing percutaneous coronary intervention in the daily practice. *Cardiovasc Diagn Ther*. 2015;5:414–9.